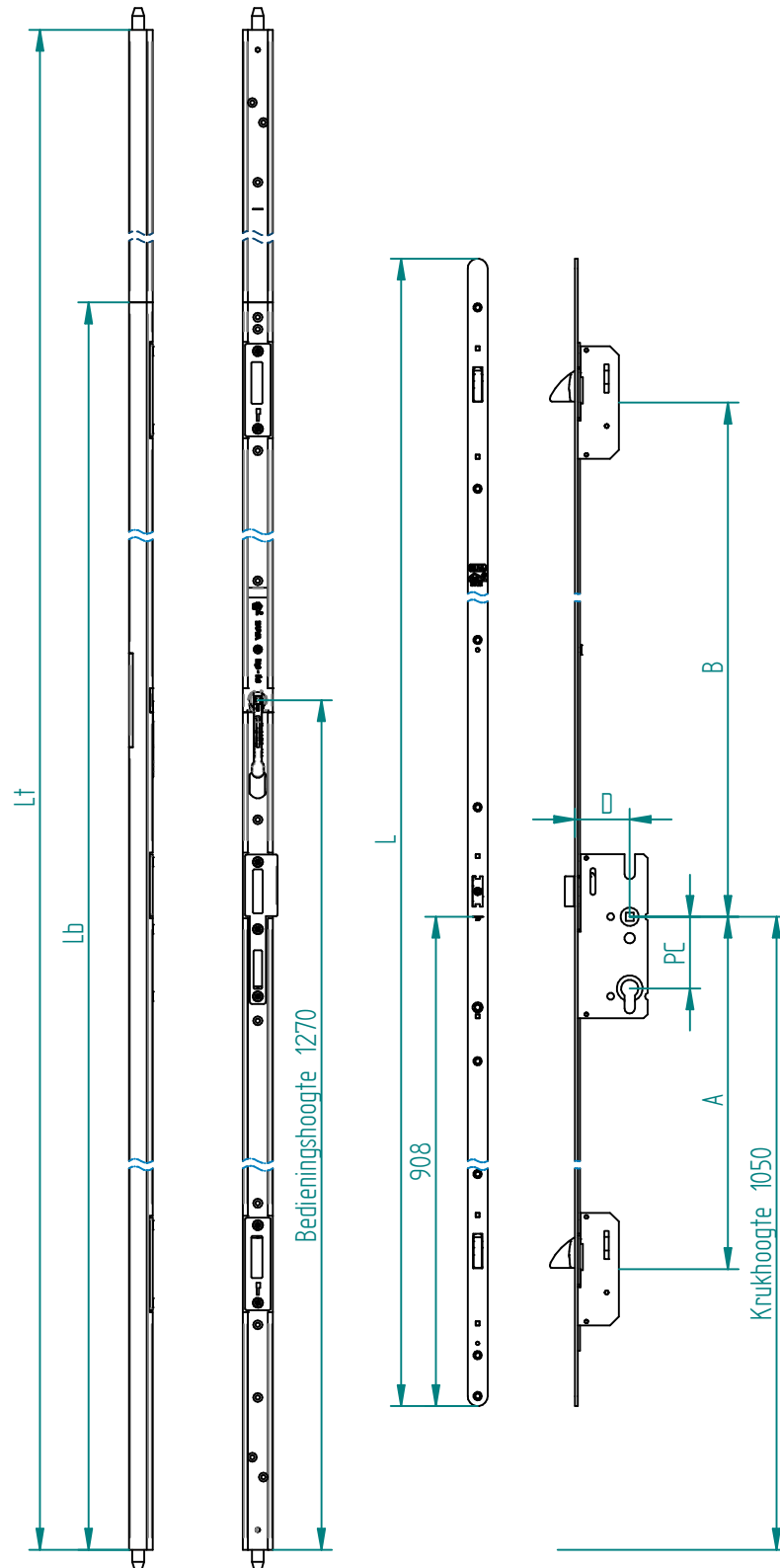


Benaming	Blad	Bladnummer	Revisie
Ergo-Duo met MultiFin Gen 2	Blad 3	202432-06	06
Freestekening Ergo-Duo	Blad 4	20070037.1073	B01
Freestekening Deurstijl t.b.v MultiFin 1772-2090	Blad 5	202493-03	03
Freestekening sluitplaat 211 boven	Blad 6	20100025.1007	A01
Sluitplaat 211 voor Bi	Blad 7	20100023.1005	B01
Nastelmogelijkheden 211	Blad 8	20100023.1007	B01
Freestekening sluitplaat 431 boven	Blad 9	20100025.1008	B01
Sluitplaat 431 voor Bu	Blad 10	20100023.1006	C01
Nastelmogelijkheden 431	Blad 11	20100023.1008	B01
Freestekening 340 t.b.v. Ergo-Duo	Blad 12	20100025.1006	A01
Nastelmogelijkheden sluitpot 340	Blad 13	20080035.1001	A01
Mogelijke stolpoplossing binnendraaiend (Kozijn Bi 54mm deur)	Blad 14	20100025.1009	B01
Mogelijke stolpoplossing binnendraaiend dubbele aanslag (Kozijn dubb. aanslag Bi 54mm deur)	Blad 15	20100025.1015	A01
Mogelijke stolpoplossing buitendraaiend (Kozijn Bu 54mm deur)	Blad 16	20100025.1010	B01
Sluitpot 432	Blad 17	20110015.1018	D01
Sluitpot 432 flens 9gr	Blad 18	20110015.1016	B01
Sluitpot 432 flens 5gr	Blad 19	20110015.1017	B01
Sluitpot 432 standen	Blad 20	20110015.1006	D01
Sluitpot 432 freestekening	Blad 21	20110015.1020	E01
Sluitplaat 433 voor Bi en Bu	Blad 22	203309-02	A02
Freesbewerking Sluitplaat 433	Blad 23	203312-03	A03
Nastelmogelijkheden 433	Blad 24	203313-02	A02
Sluitplaat 450 voor Bu	Blad 25	203074-03	A03

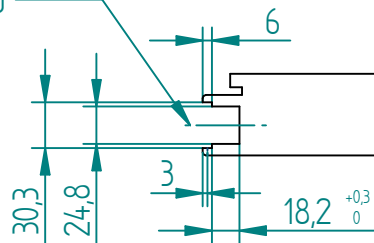
Benaming	Blad	Bladnummer	Revisie
Freesbewerking Sluitplaat 450	Blad 26	203084-04	A04
Nastelmogelijkheden 450	Blad 27	203090-03	A03
Sluitplaat 452 voor Bi en Bu	Blad 28	204397-01	A01
Freesbewerking Sluitplaat 452	Blad 29	204399-01	A01
Nastelmogelijkheden 452	Blad 30	204403-01	A01



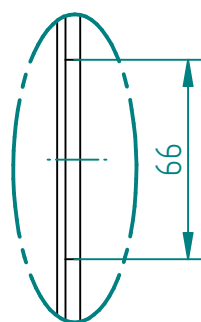
	Lengte MPS	Basis Ergo-Duo	Totaal Ergo-Duo minimaal	Totaal Ergo-Duo maximaal	Zwenkschoot 1	Zwenkschoot 2	Doormaat	Doorn 55	Doorn 65
MPS / maat	L	Lb	Lt	Lt	A	B	PC	D	D
MultiFin 1772	1772	1865	2045	2400	770,5	719,5	72	v	v
MultiFin 2090	2090	1865	2300	2400	770,5	1074,5	72	v	v
MultiFin 2090	2090	2220	2401	2700	770,5	1074,5	72	v	v

Ergo-Duo bevestigen met schroeven 4x50mm  
MultiFin Gen 2 bevestigen met schroeven 4x40mm

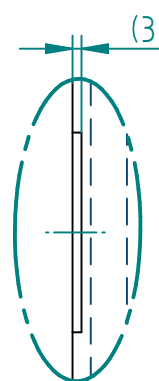
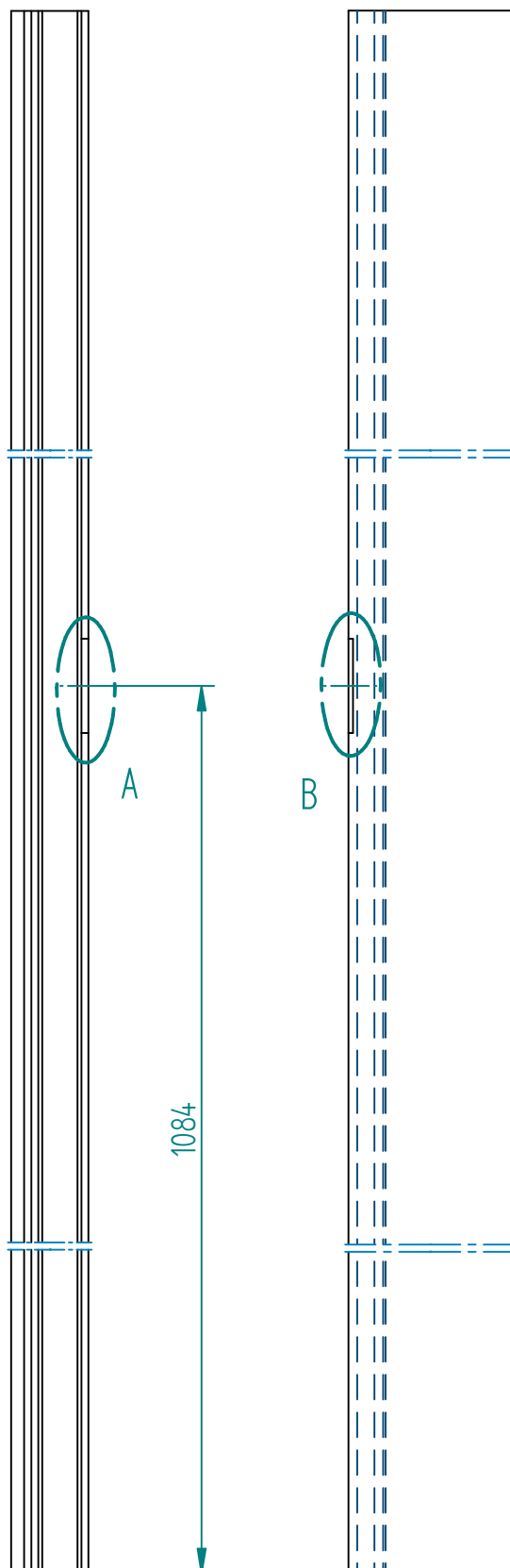
Hart Ergo-Duo  
= Hart MPS



**BUVA**  
rationele bouwprodukten

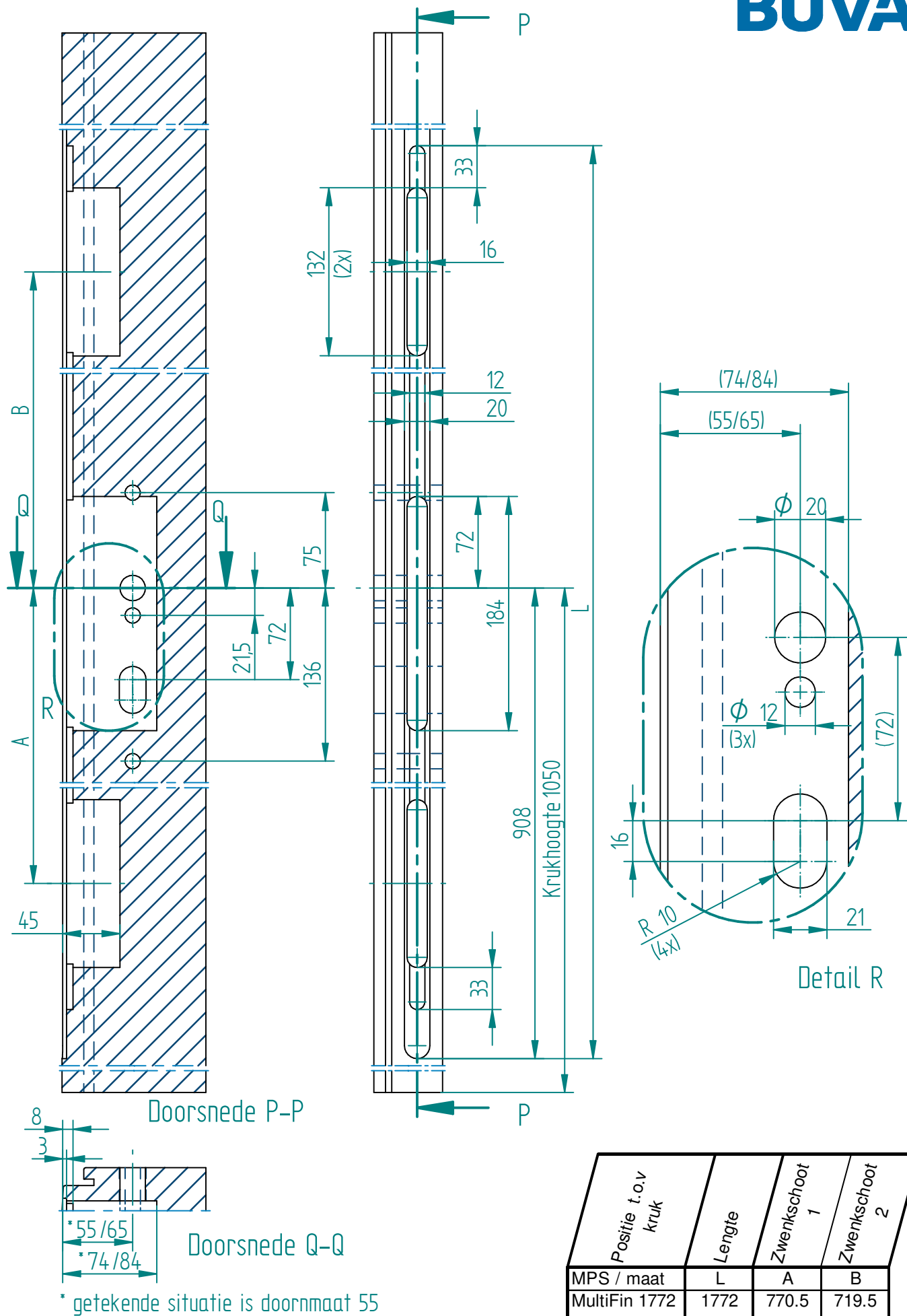


Detail A

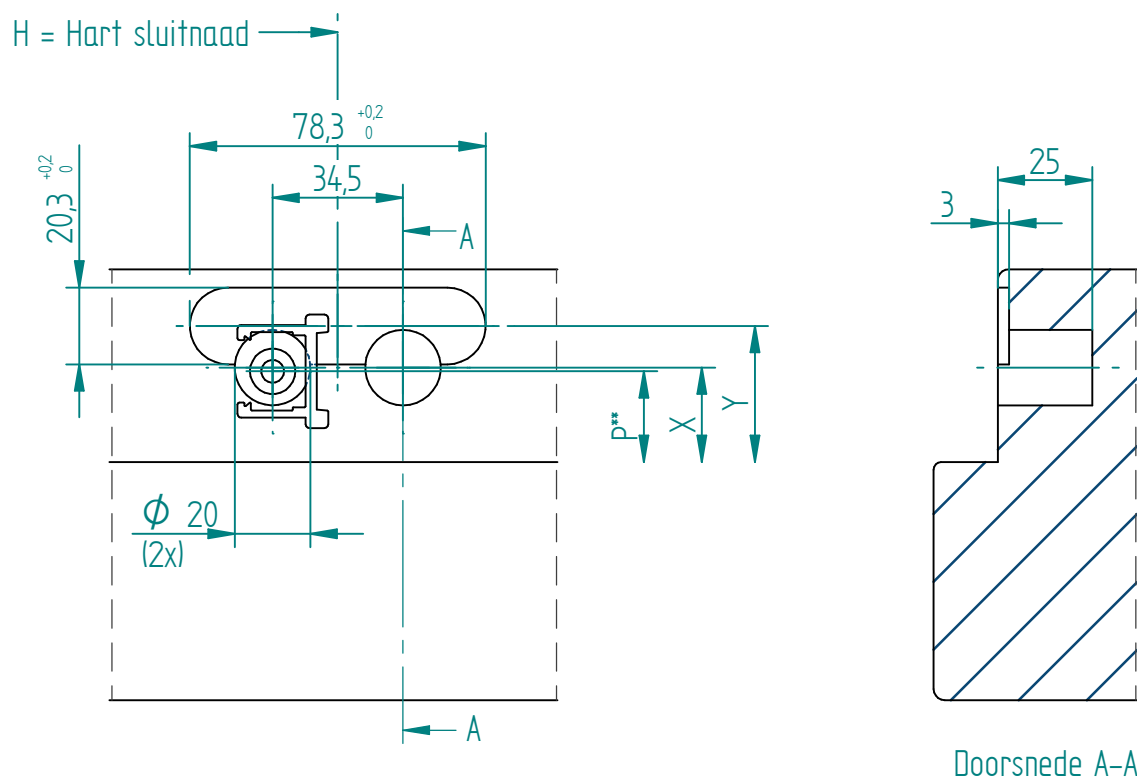


Detail B

Let op: In maatvoering is geen rekening gehouden met eventuele laagdikte(n) lak



Let op: In maatvoering is geen rekening gehouden met eventuele laagdikte(n) lak

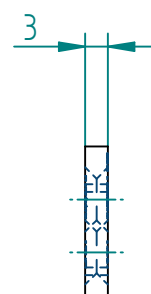
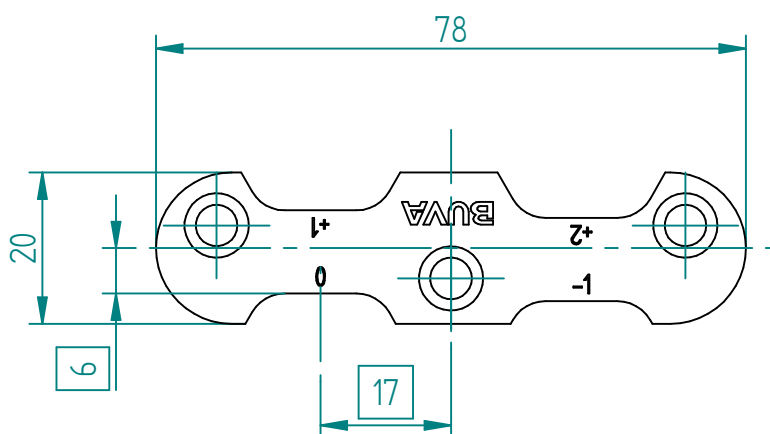
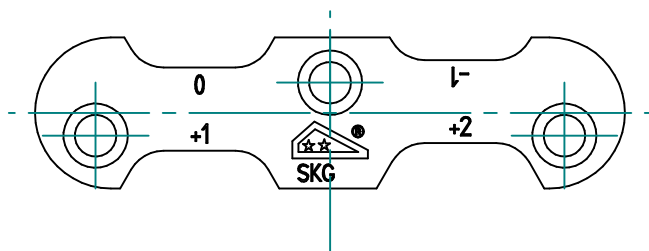


Deurdikte	maat P	maat X	maat Y
38*	24	25	36
40	25	26	37

\* getekende situatie

\*\*P is Penmaat

Let op: In maatvoering is geen rekening gehouden met eventuele laagdikte(n) lak

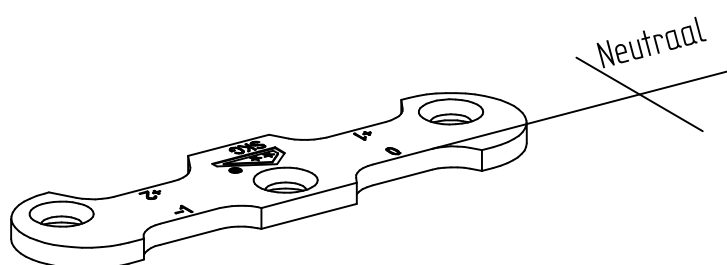
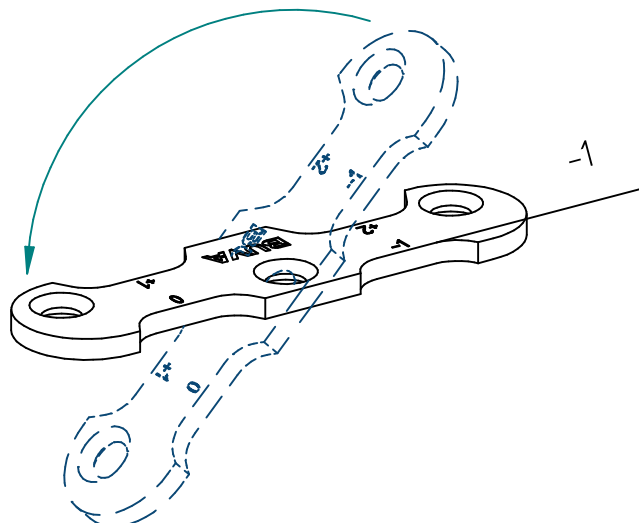
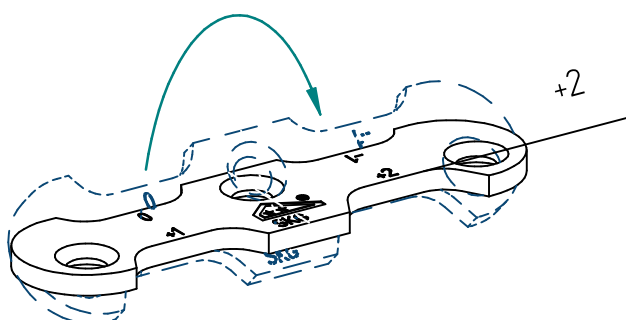
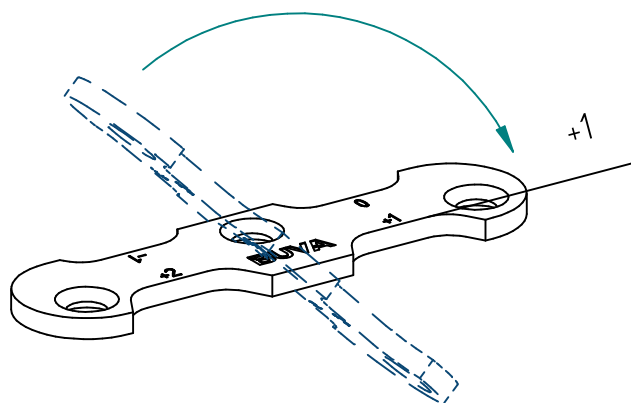


+2  
-1

Stelbereik

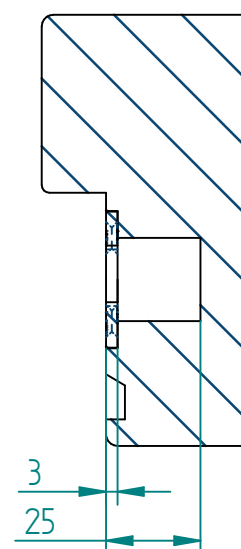
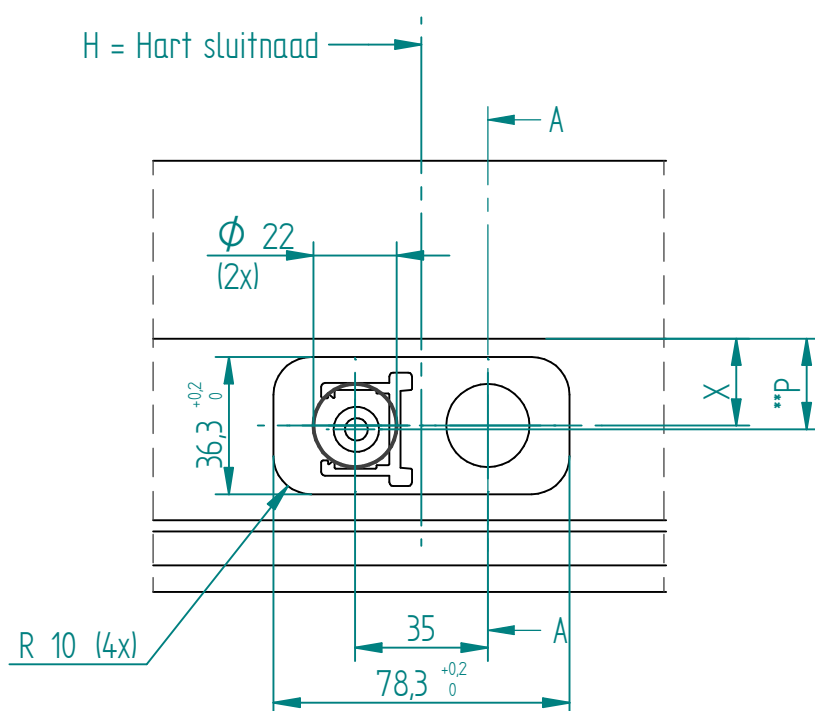
☐ zijn aanslagmaten voor de pen

Bevestigen met schroeven 4X40mm



Trimetric Orientation





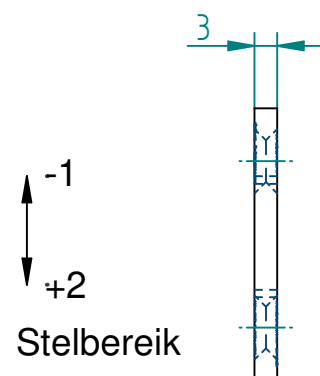
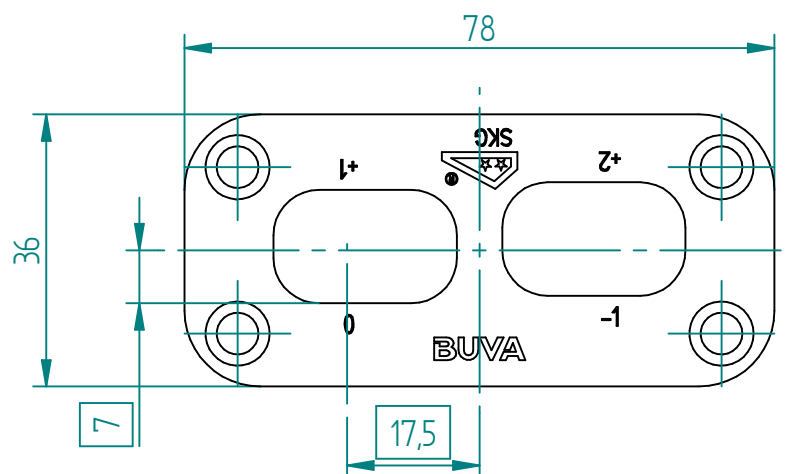
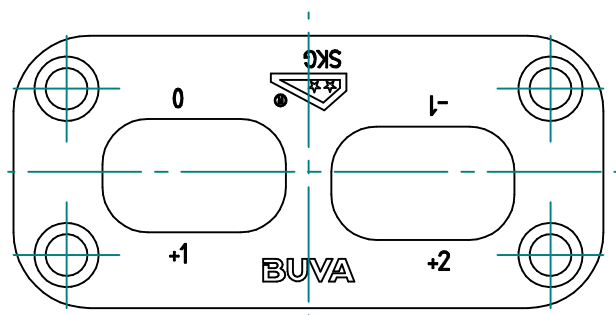
Doorsnede A-A

Deurdikte	maat P	maat X
38*	24	23
40	25	24

\* getekende situatie

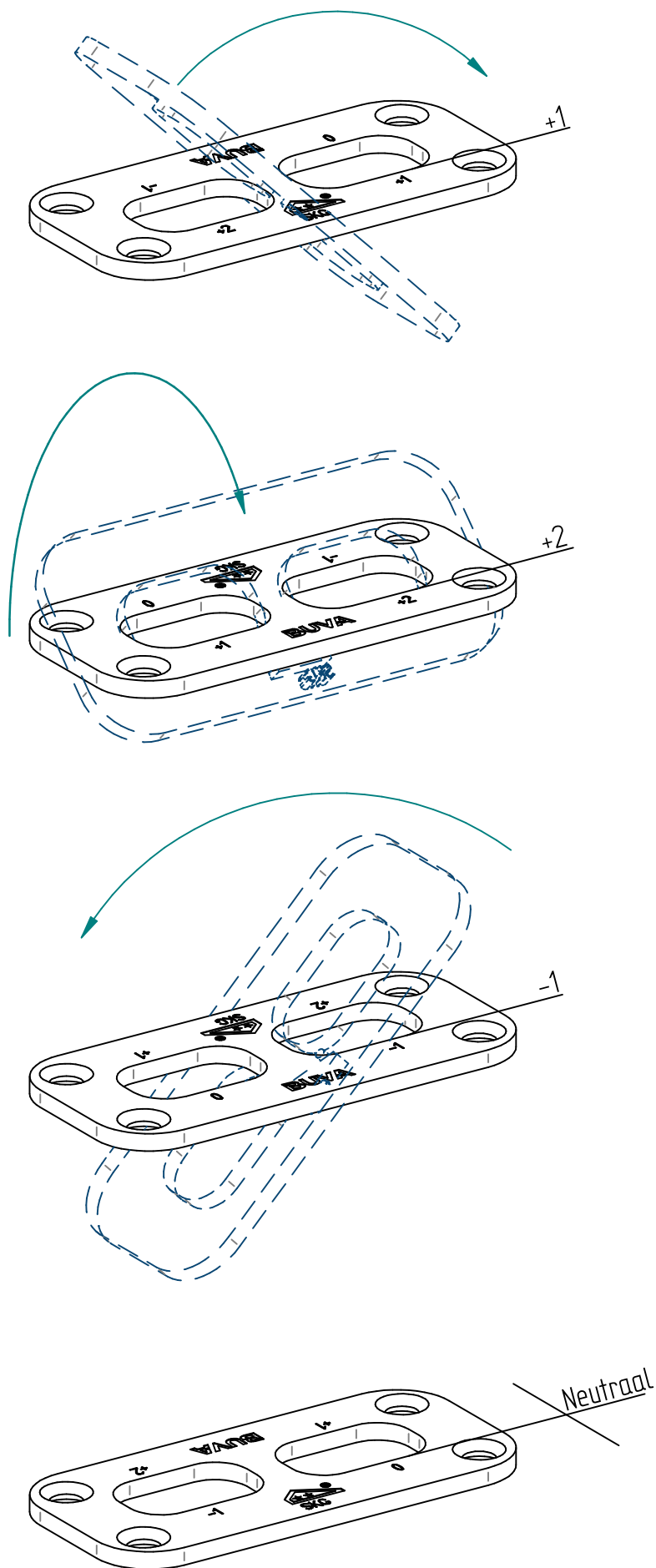
\*\*P is Penmaat

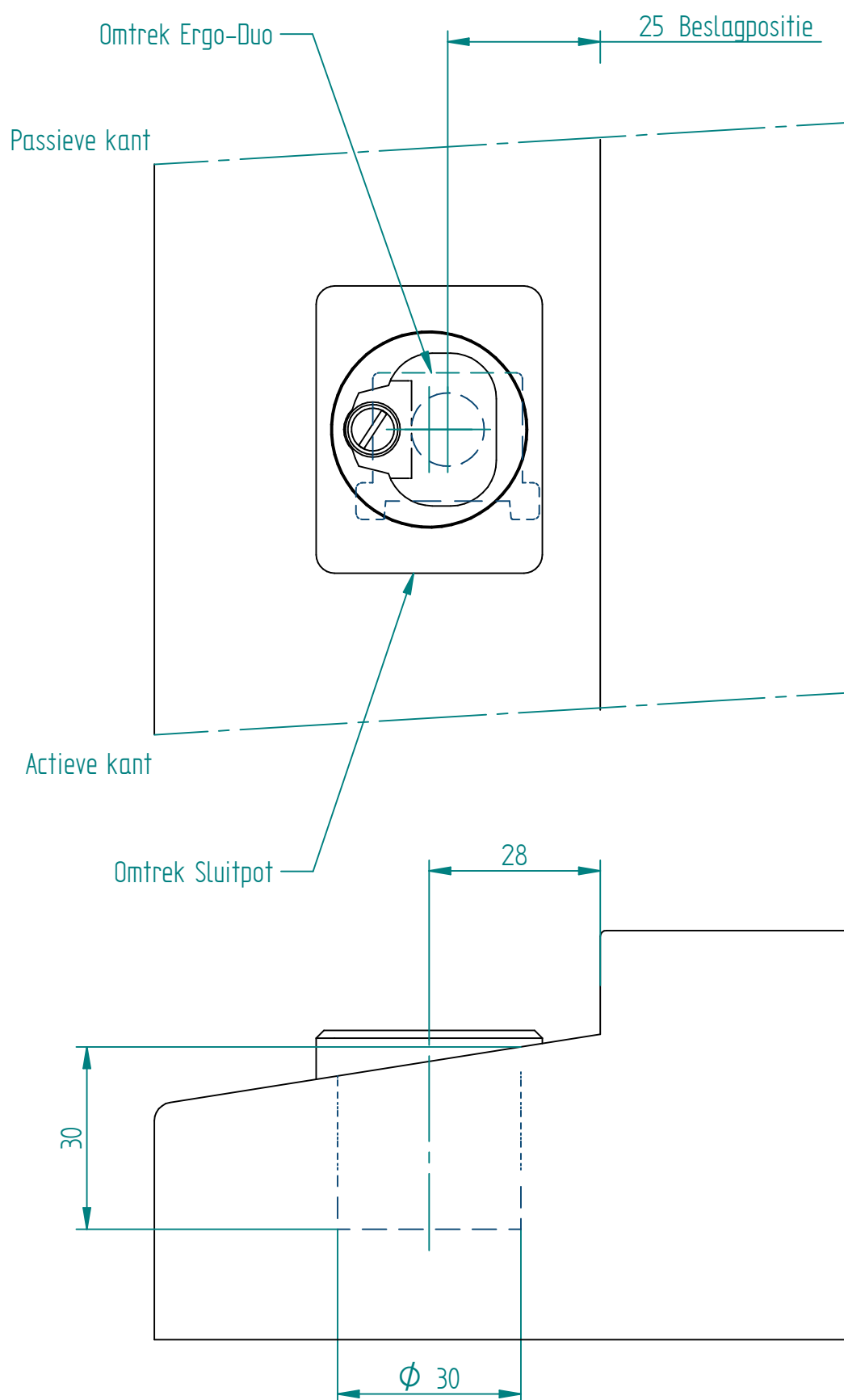
Let op: In maatvoering is geen rekening gehouden met eventuele laagdikte(n) lak



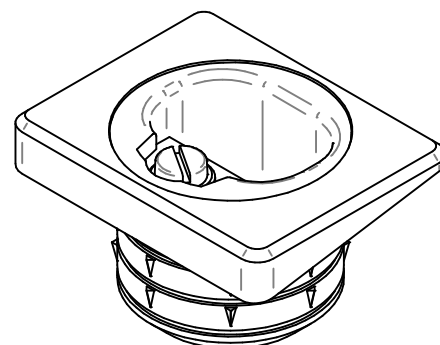
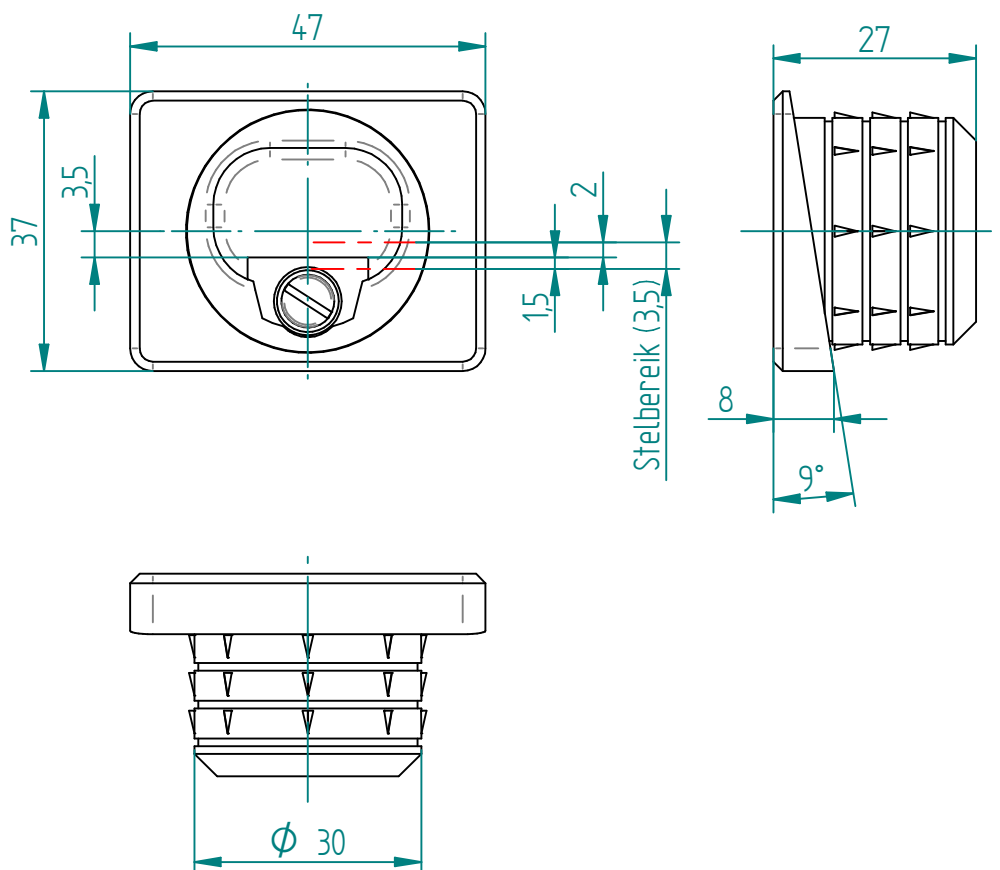
☐ zijn aanslagmaten voor de pen

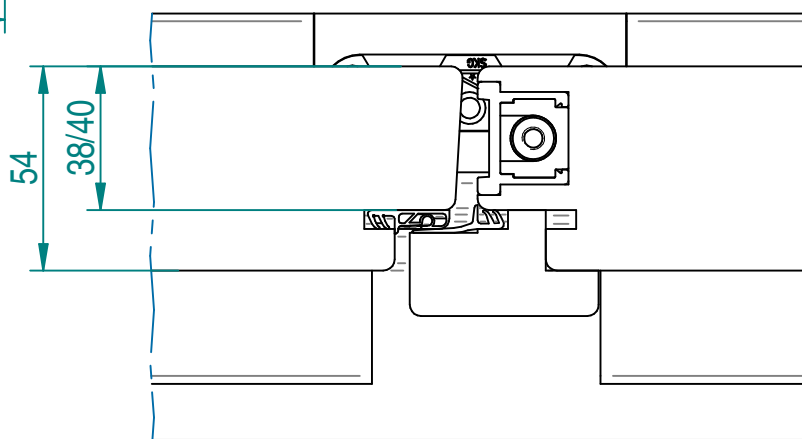
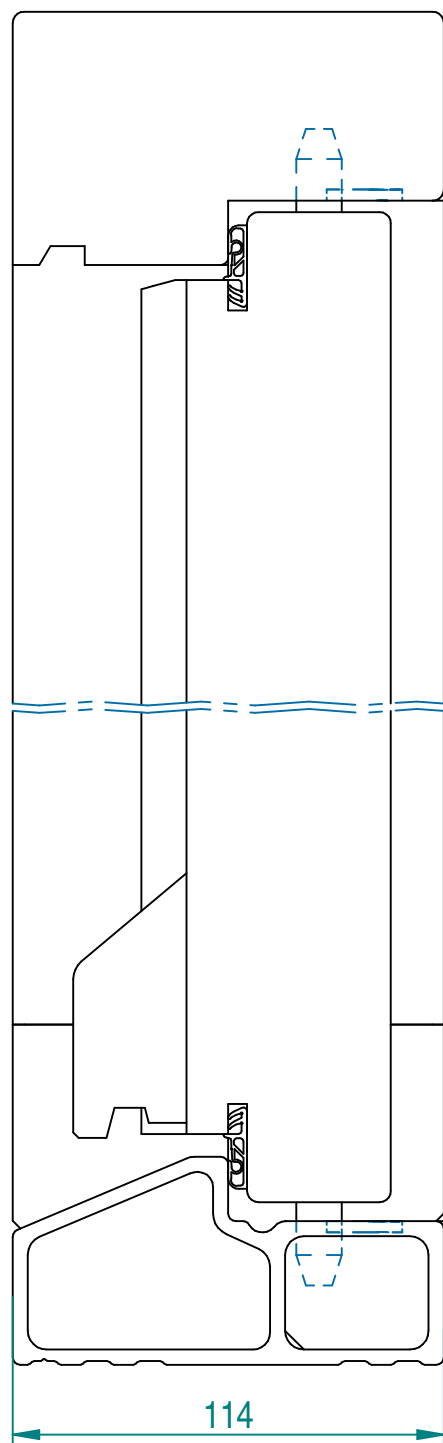
Bevestigen met schroeven 4X40mm

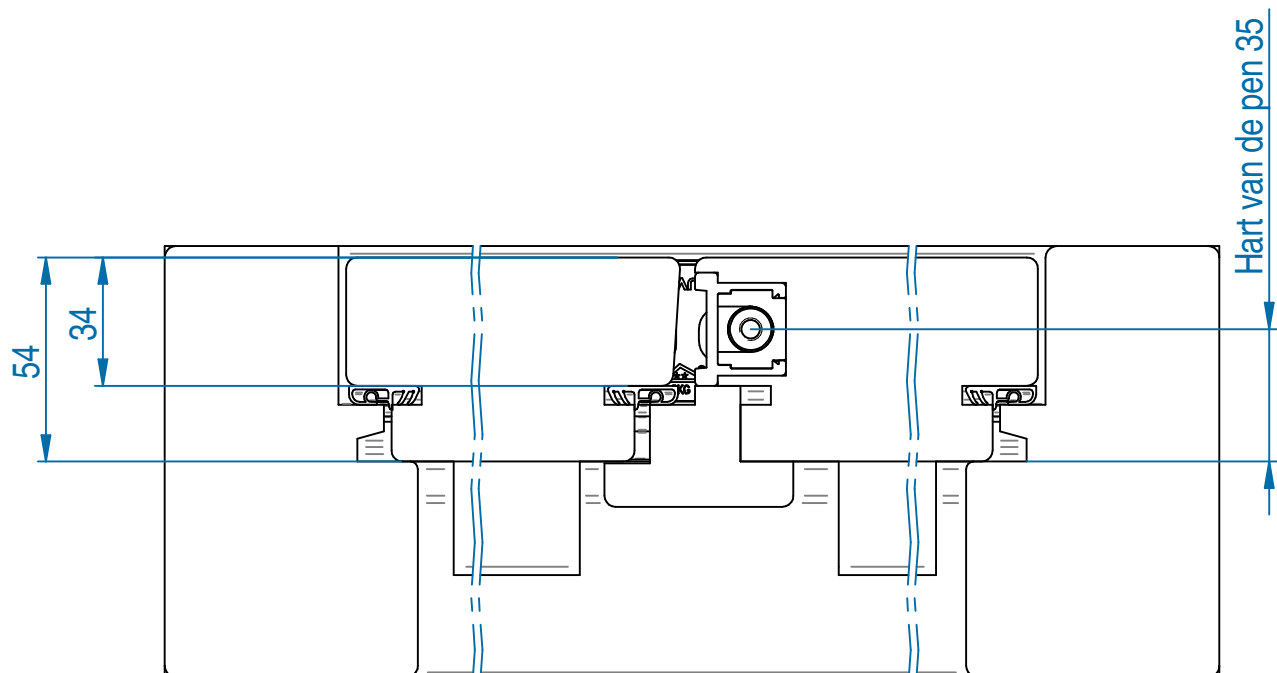
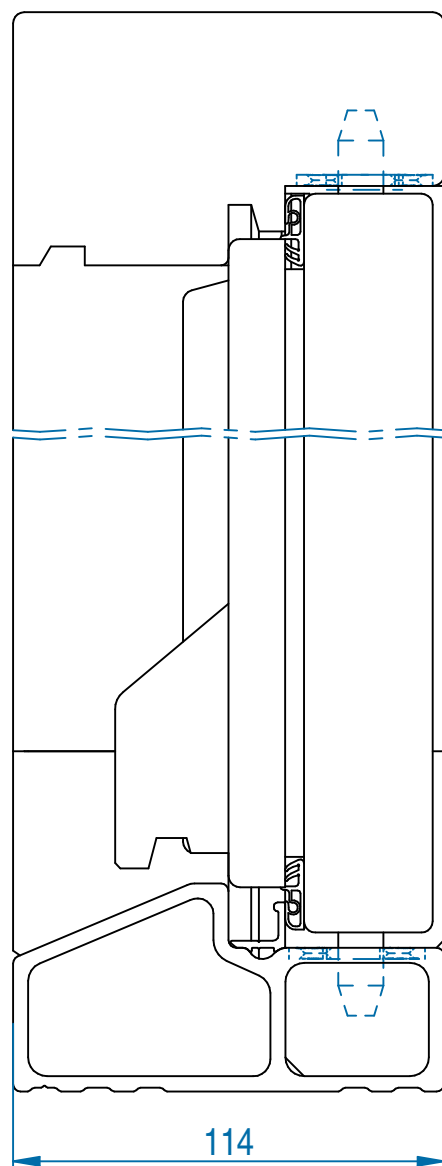


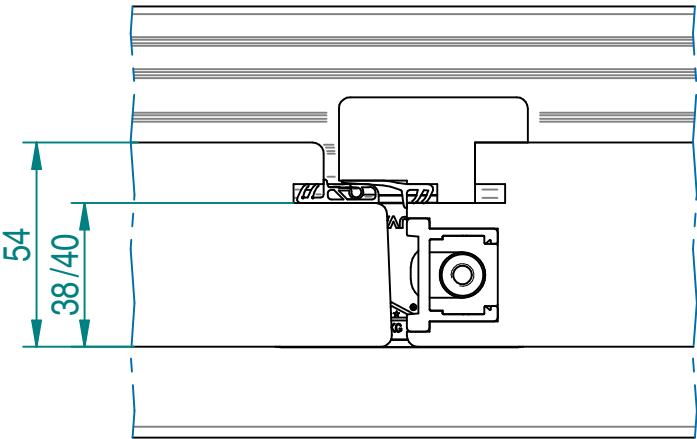
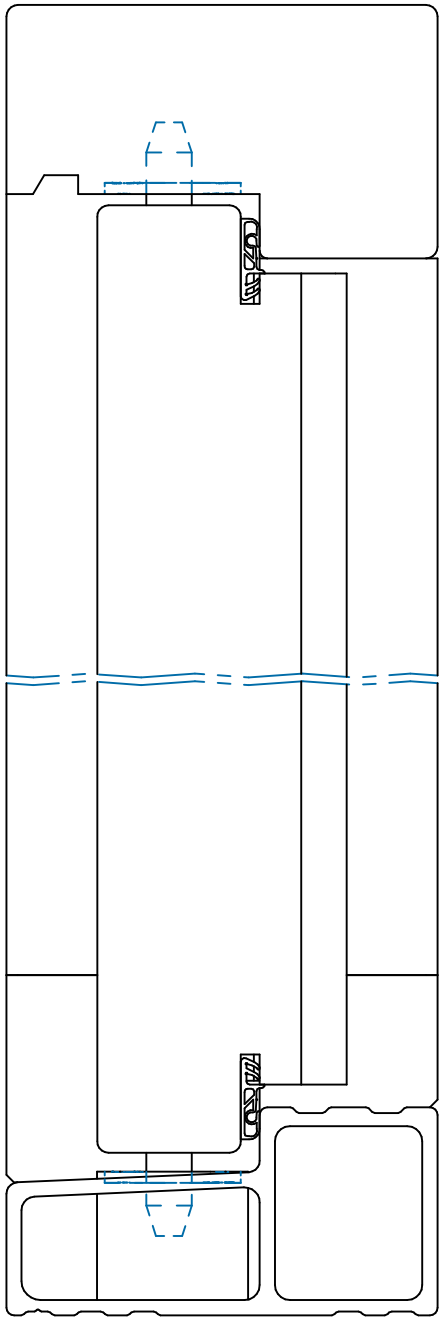


Let op: In maatvoering is geen rekening gehouden met eventuele laagdikte(n) lak

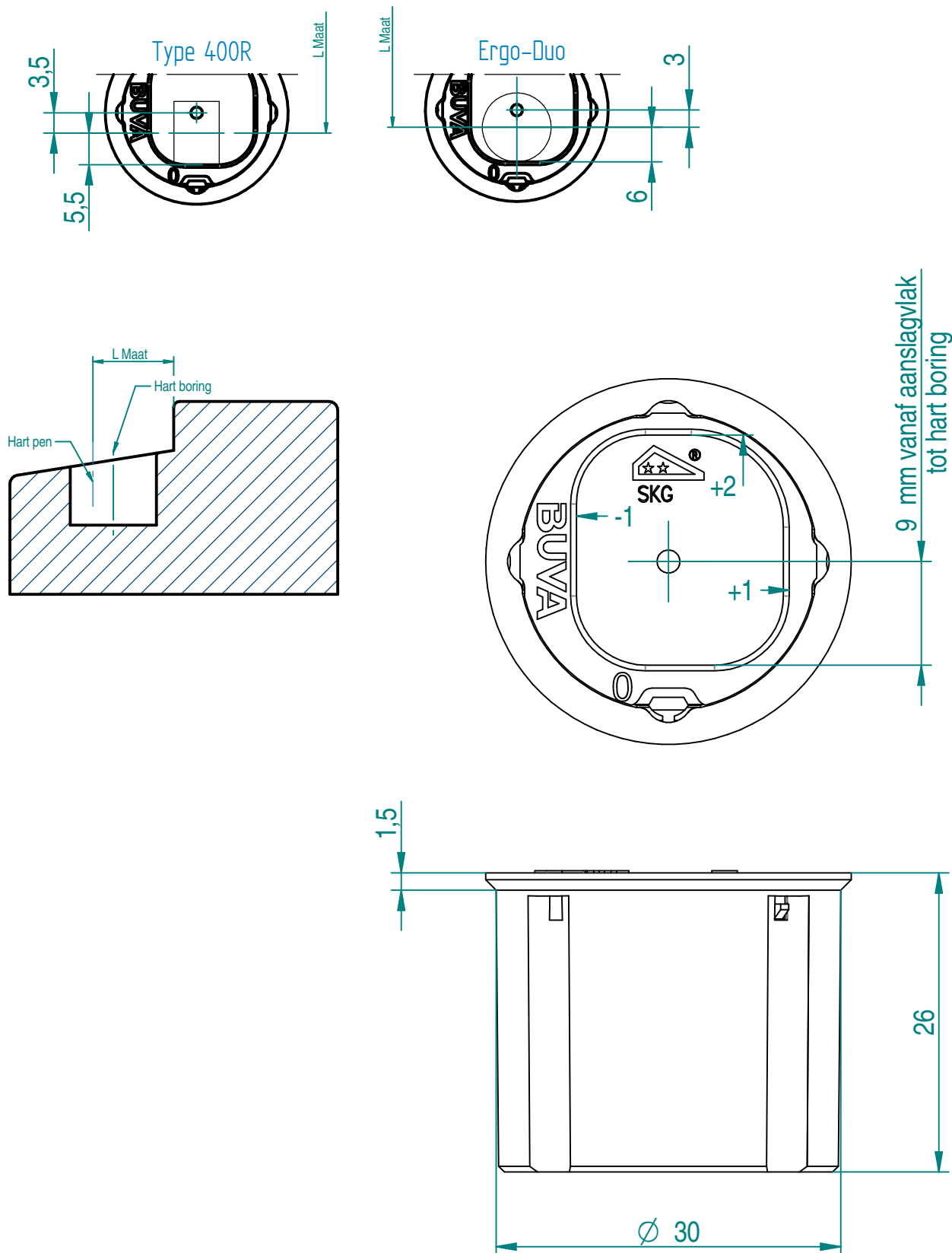




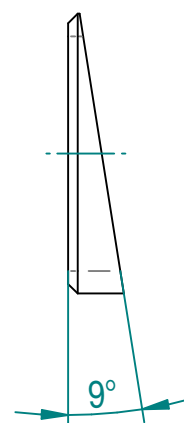
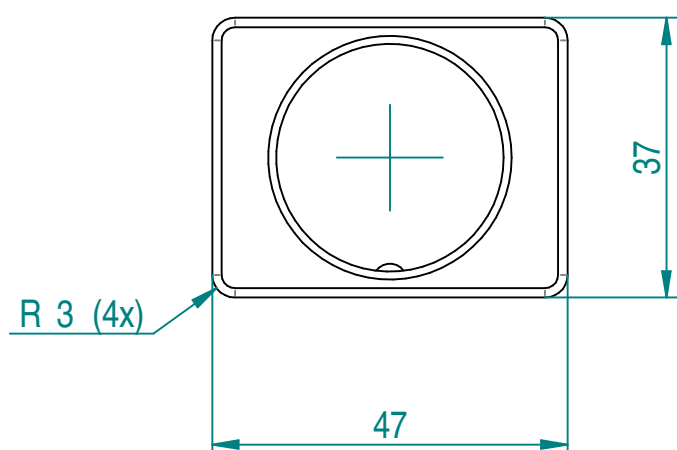
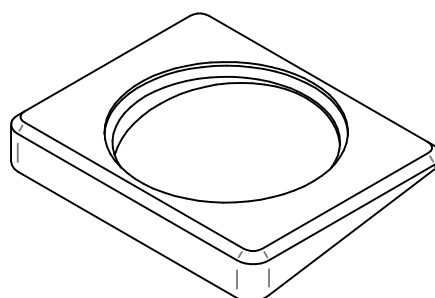


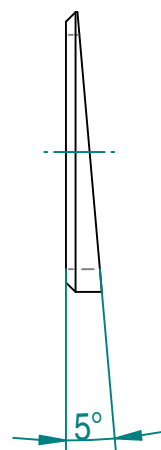
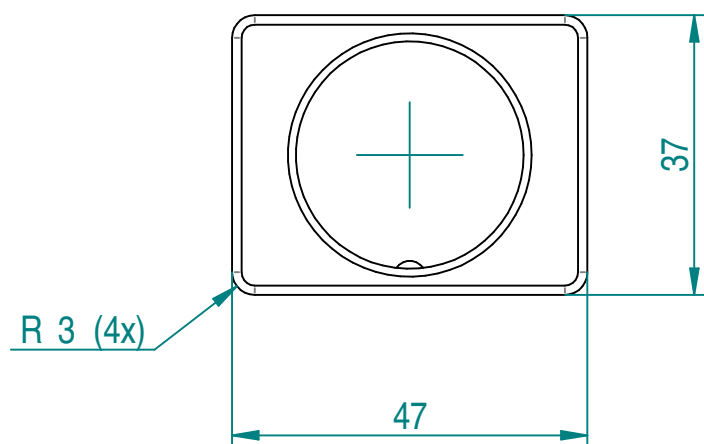
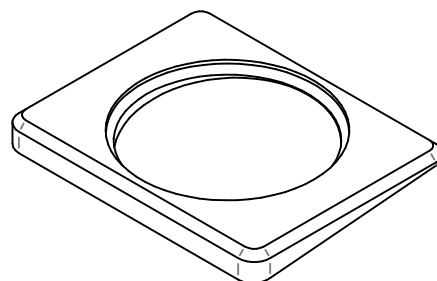


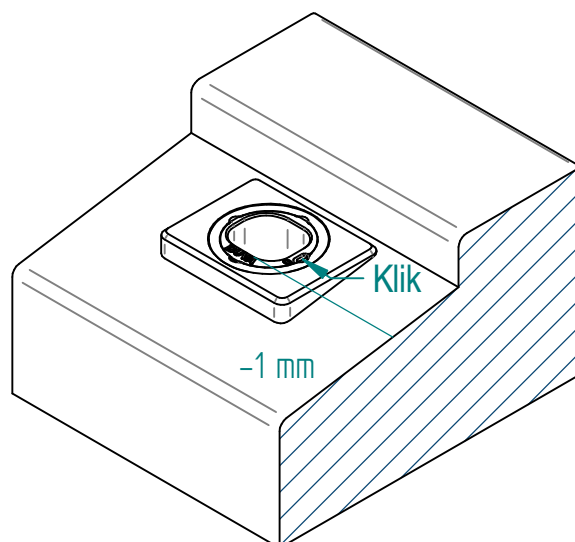
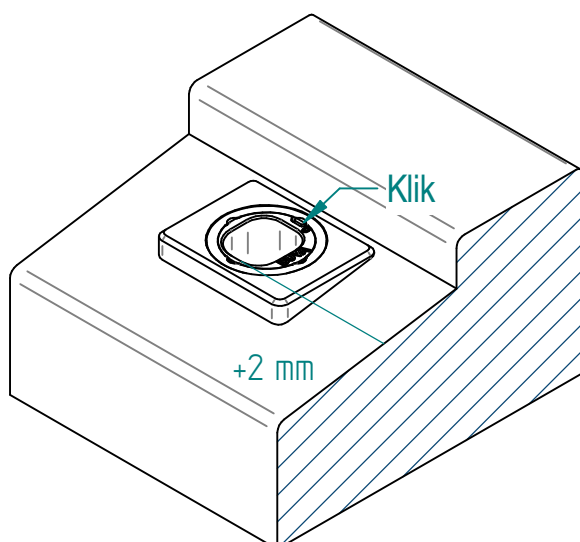
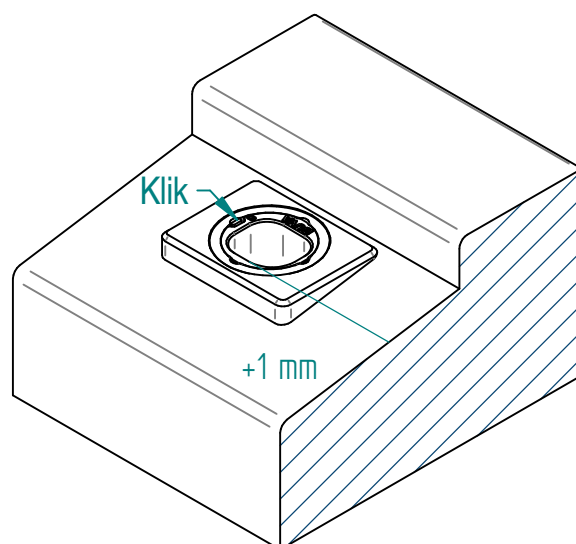
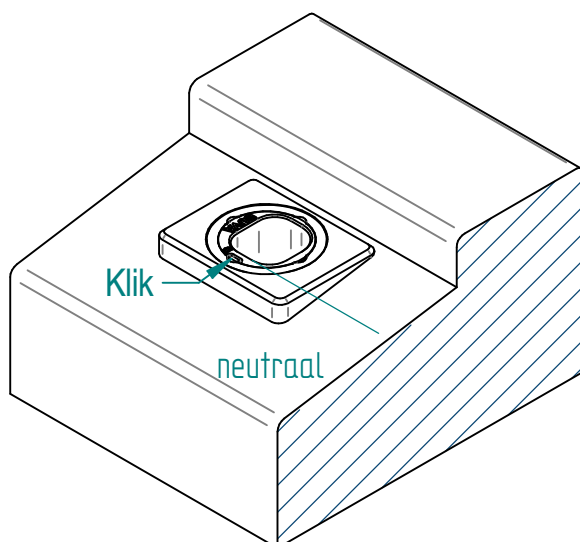
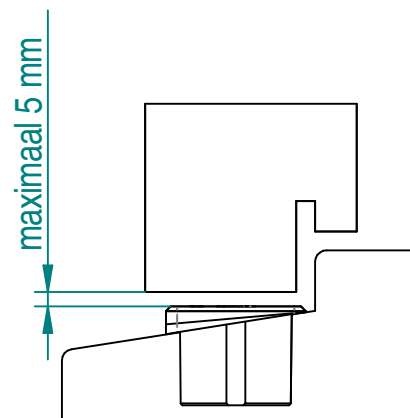
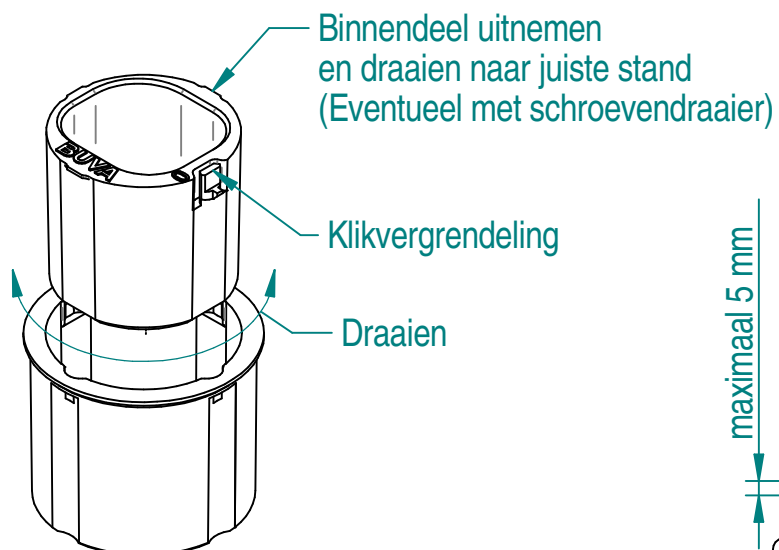


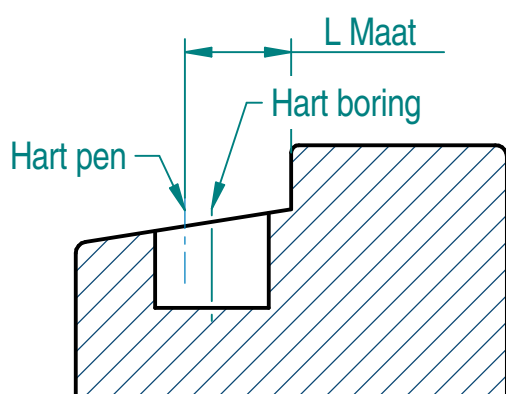
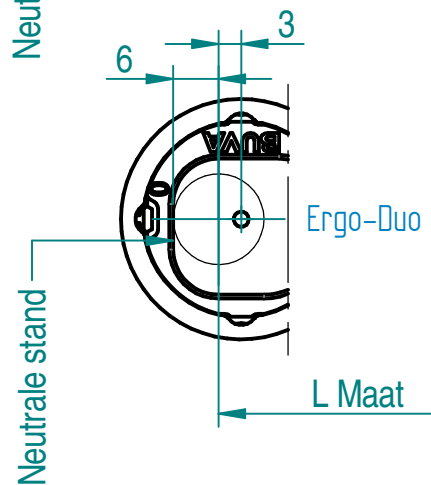
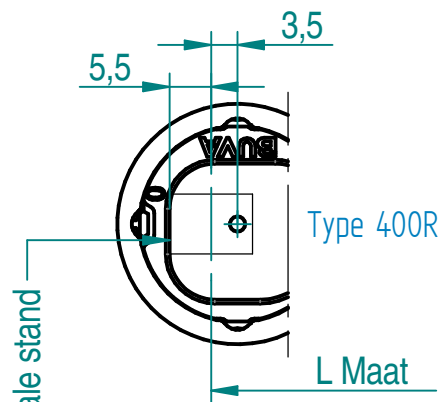


Bevestiging sluitpot : Verlijmen met minimaal D3/D4 lijm  
 Infrezen sluitpot : maximaal +0.05 mm  
 Verschroeven, alleen voor binnendraaiende  
 situatie waarbij sluitpot in damwand zit.  
 Schroef: Houtschroef VZK 4x30

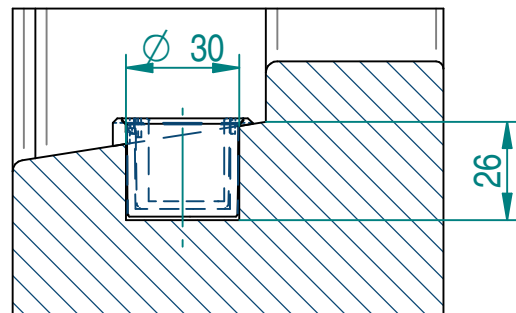
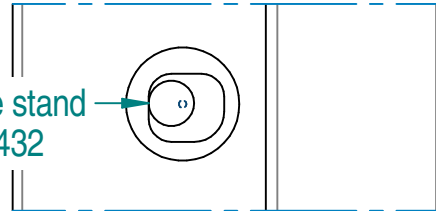




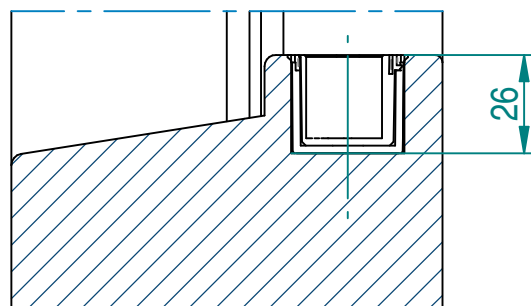
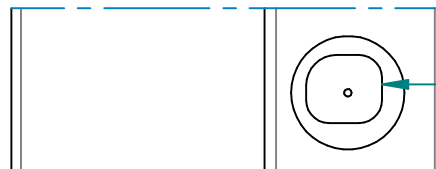


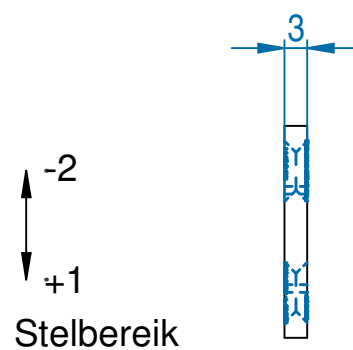
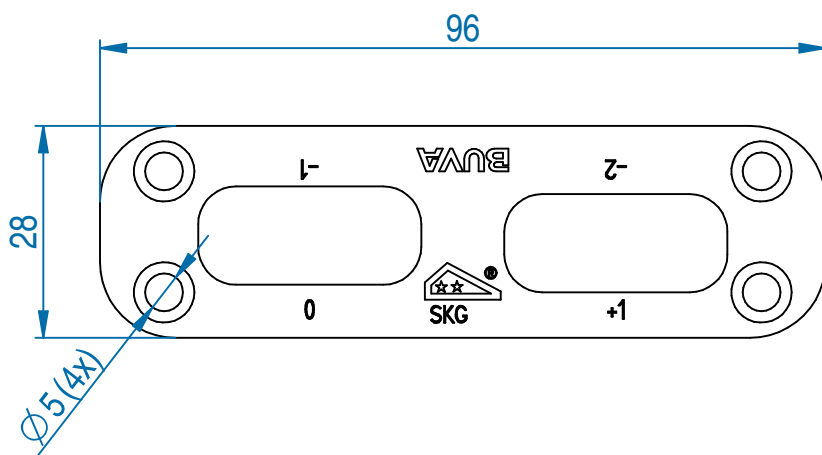
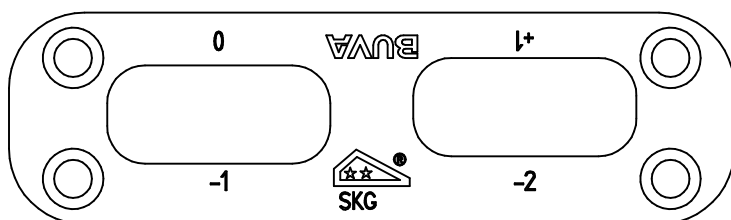


Neutrale stand  
sluitpot 432

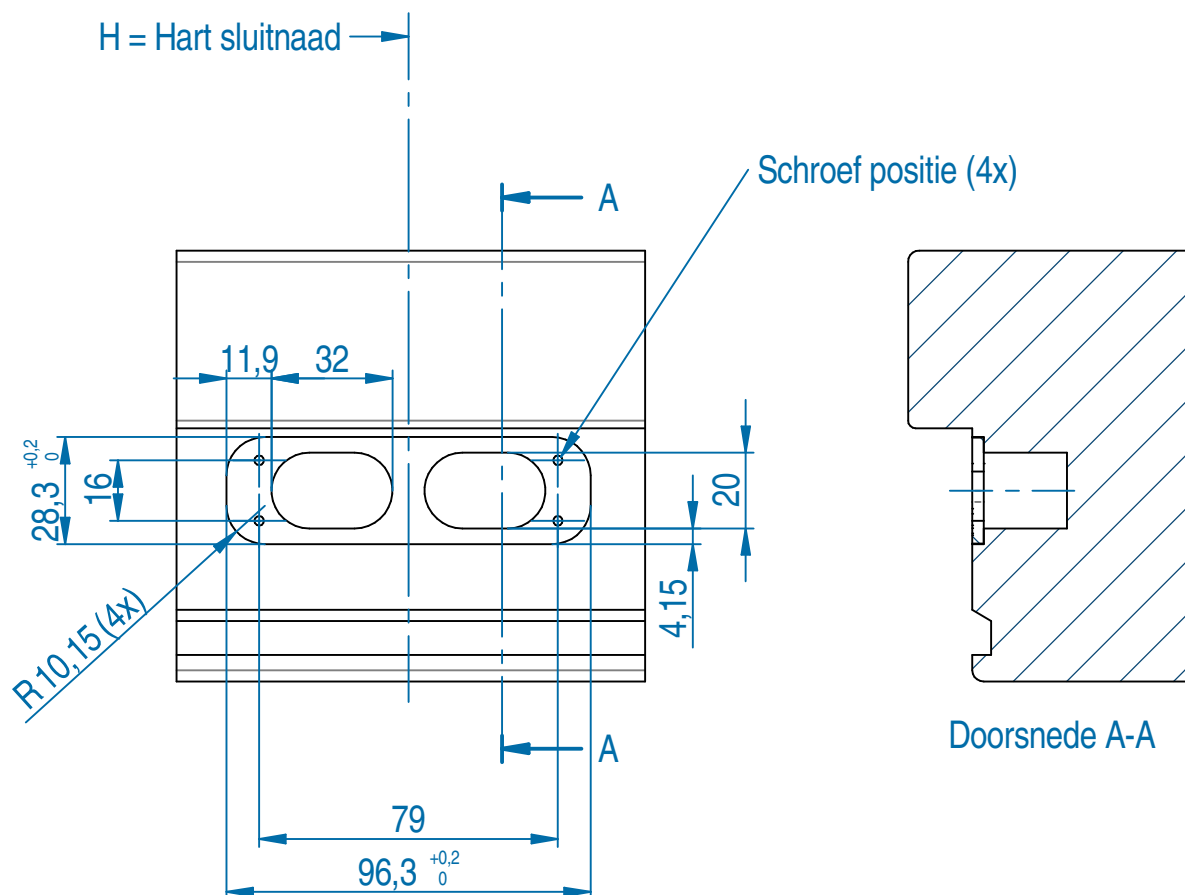


Neutrale stand  
sluitpot 432

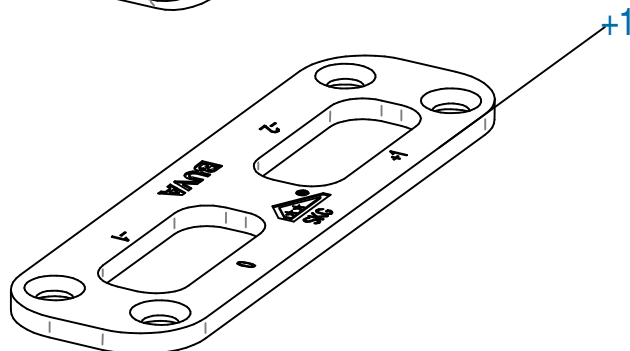
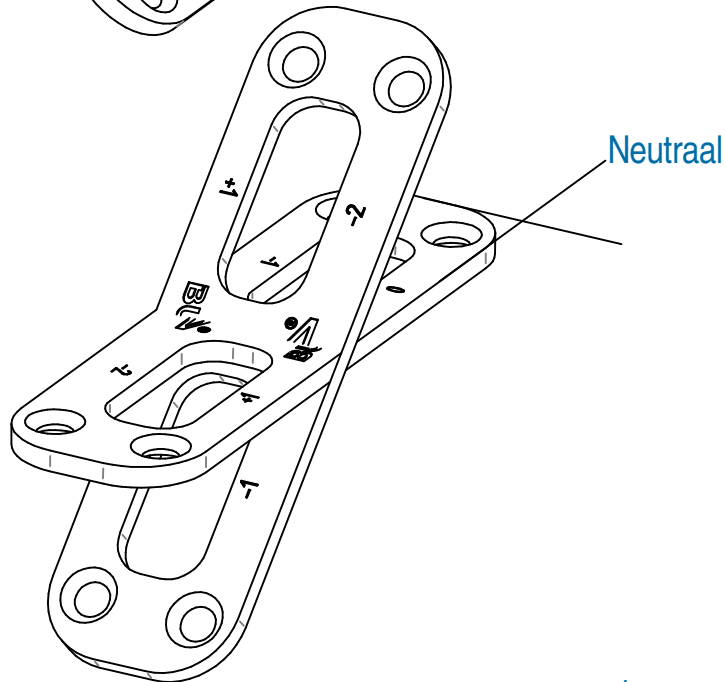
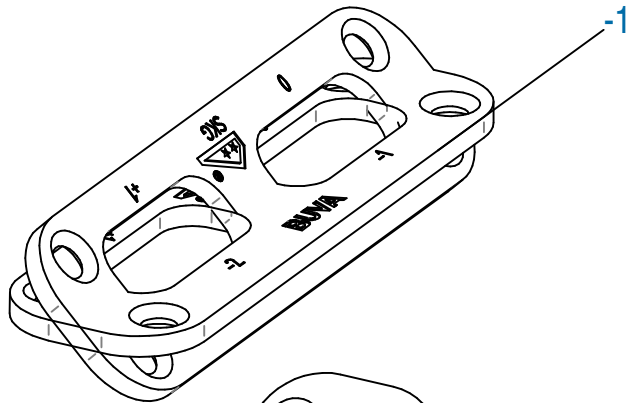
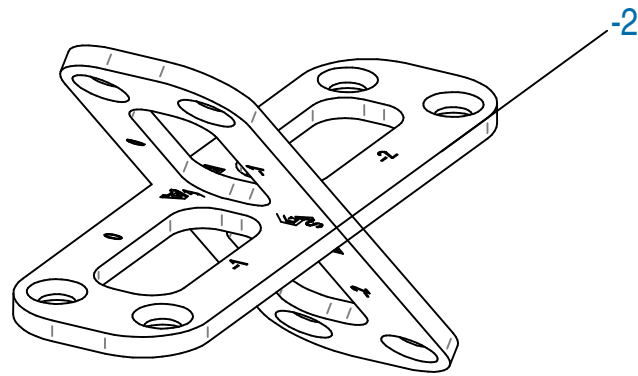




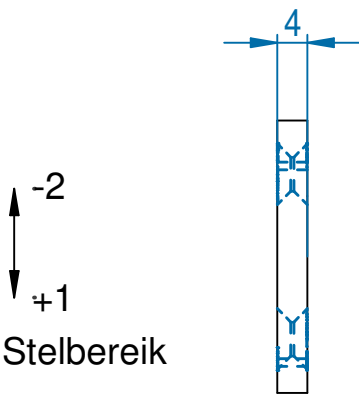
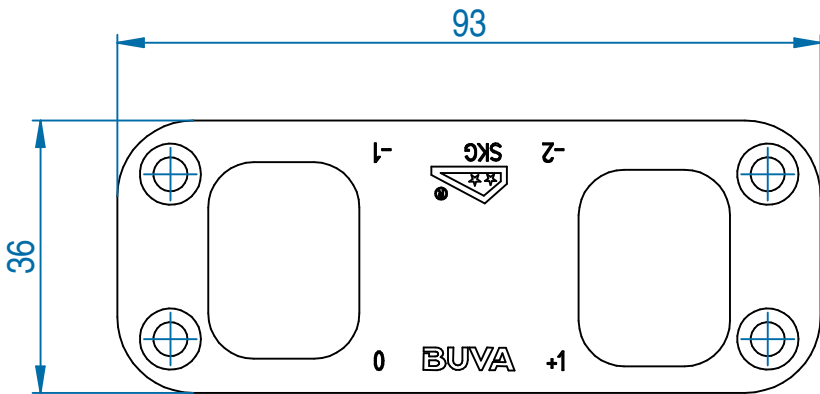
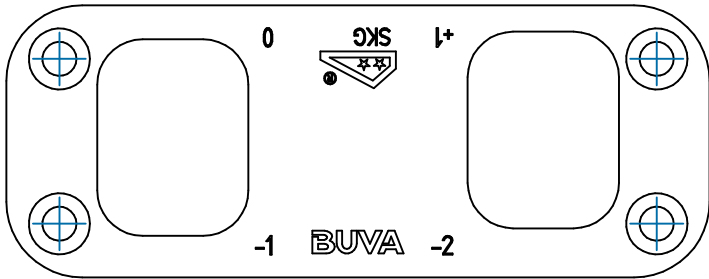
Bevestigen met schroeven 4X40mm



Let op: In maatvoering is geen rekening gehouden met eventuele laagdikte(n) lak  
Freesbewerking is gebaseerd op PE vulblokken icm ISO stone dorpels.

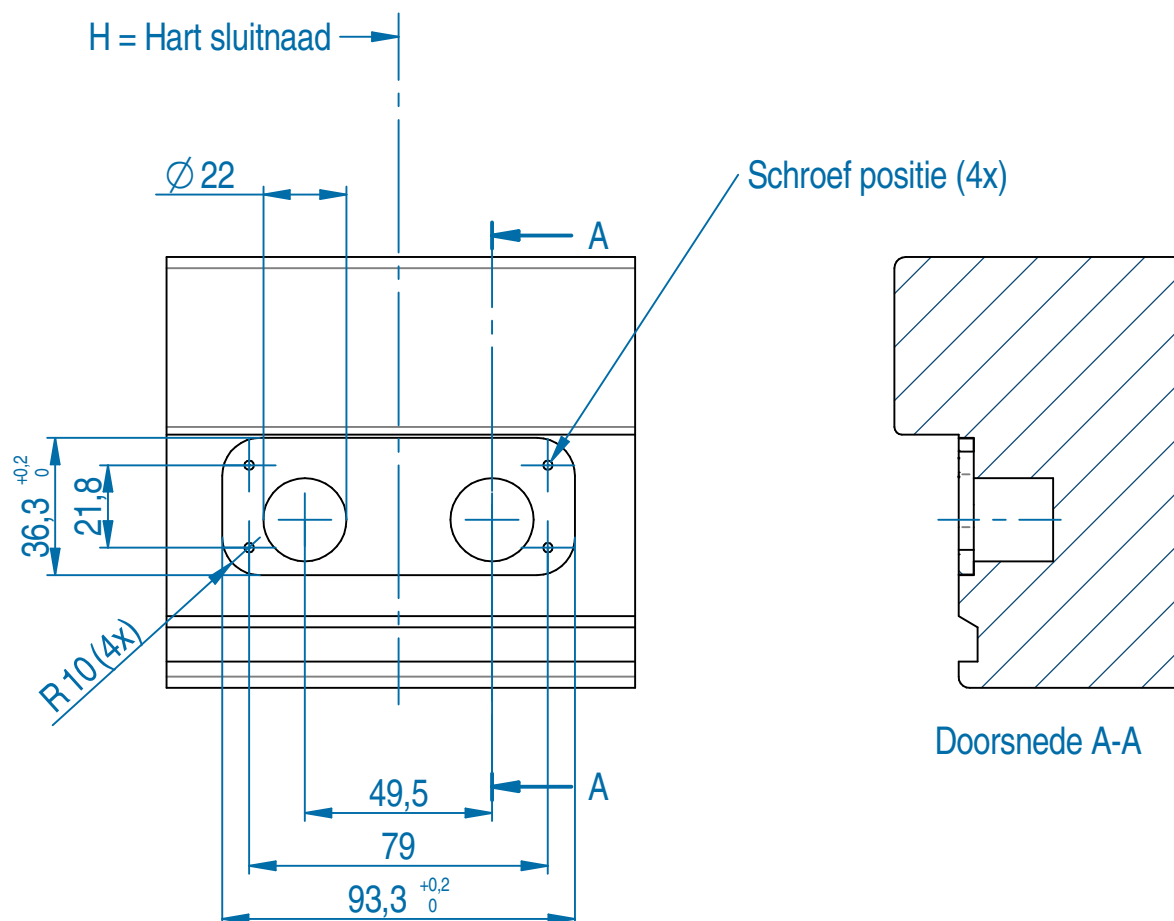




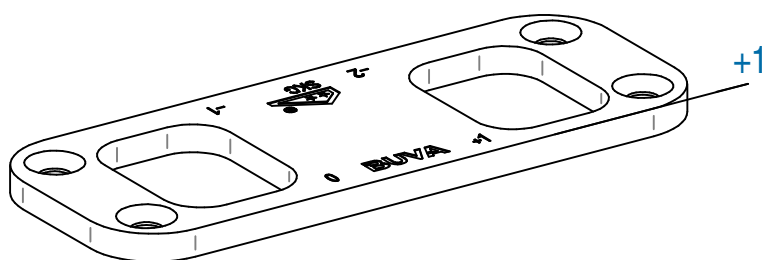
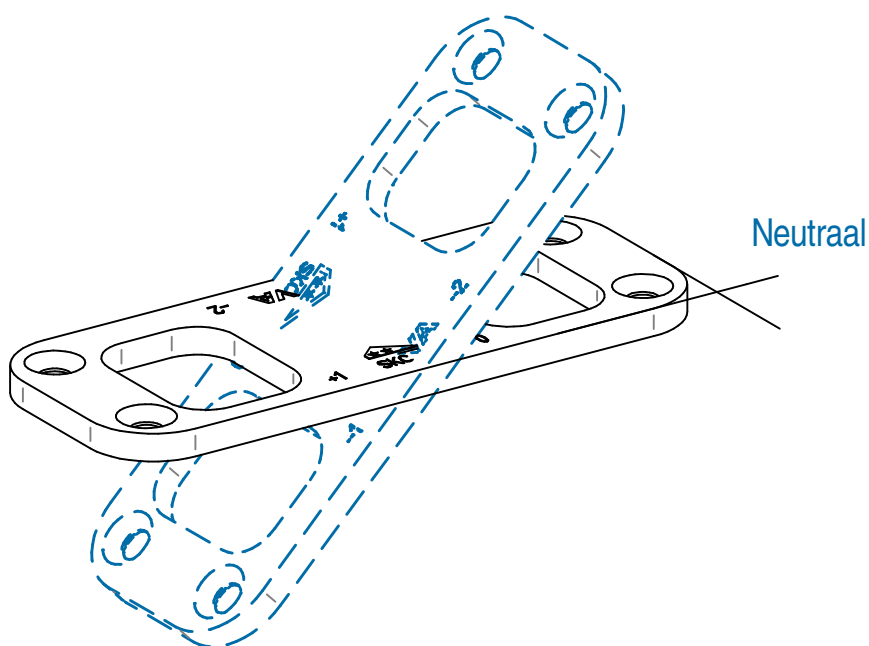
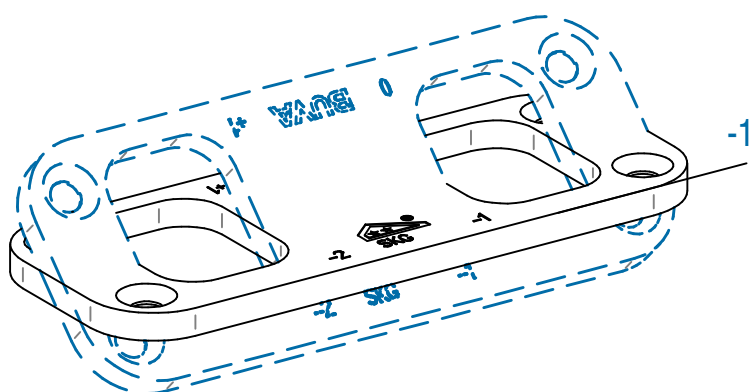
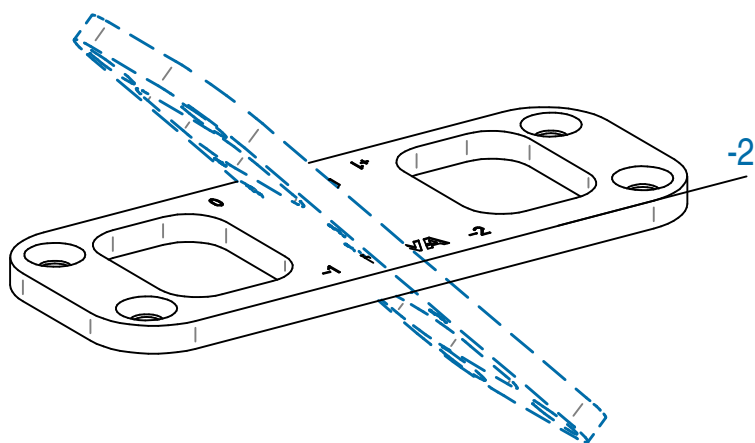


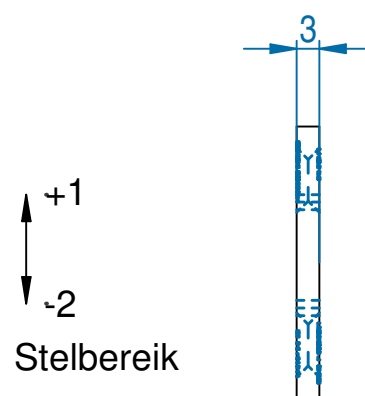
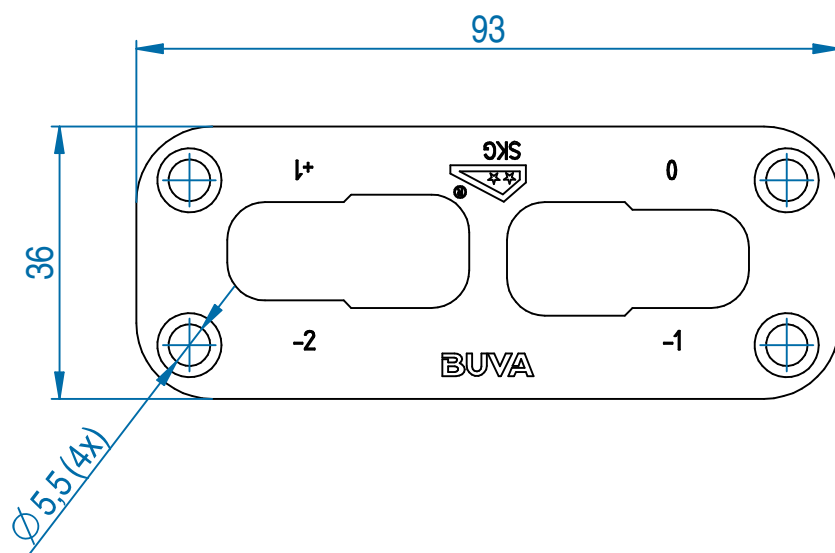
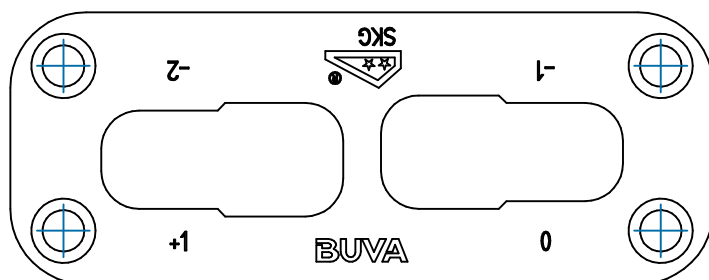
-2  
+1  
Stelbereik

Bevestigen met schroeven 4X40mm



Let op: In maatvoering is geen rekening gehouden met eventuele laagdikte(n) lak  
Freesbewerking is niet gebaseerd op PE vulblokken icm ISO stone dorpels.

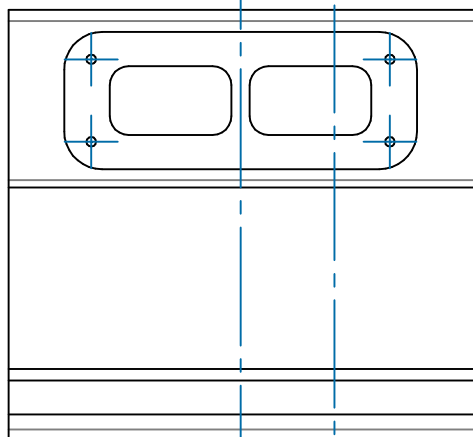




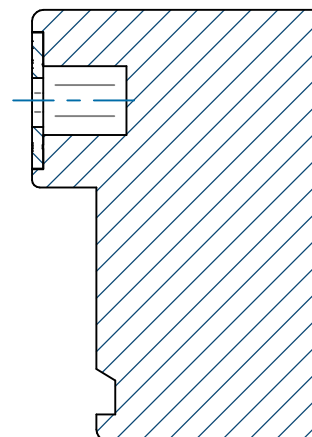
Bevestigen met schroeven 4X40mm

H = Hart sluitnaad

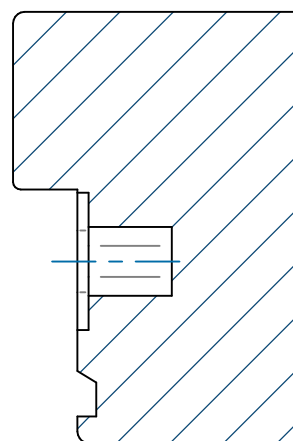
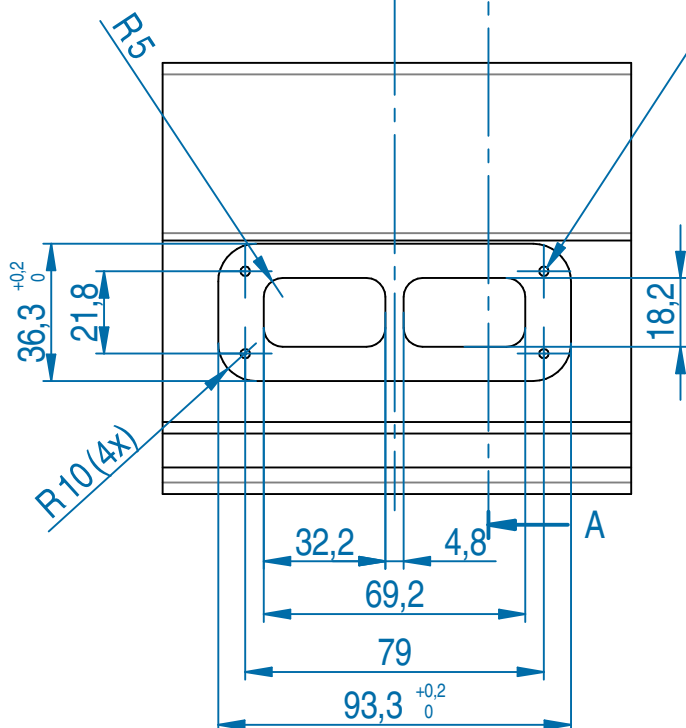
A



Op de dam



Schroef positie (4x)



Doorsnede A-A

Let op: In maatvoering is geen rekening gehouden met eventuele laagdikte(n) lak  
 Freesbewerking is niet gebaseerd op PE vulblokken icm ISO stone dorpels.

